

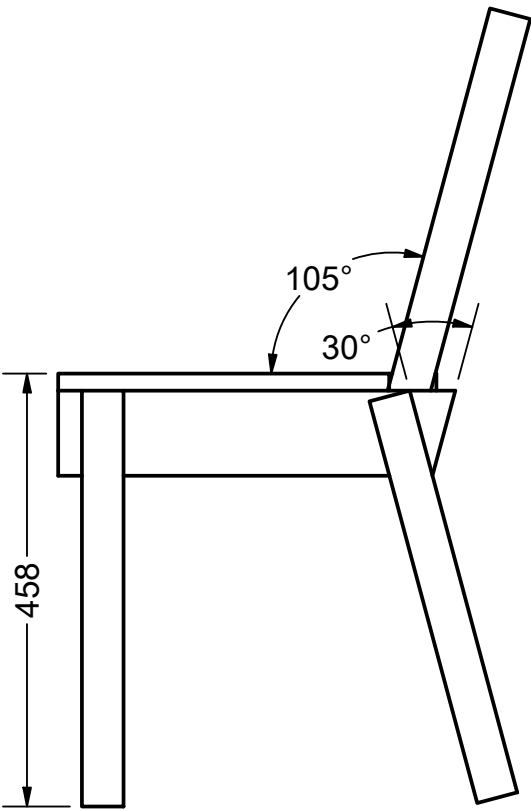
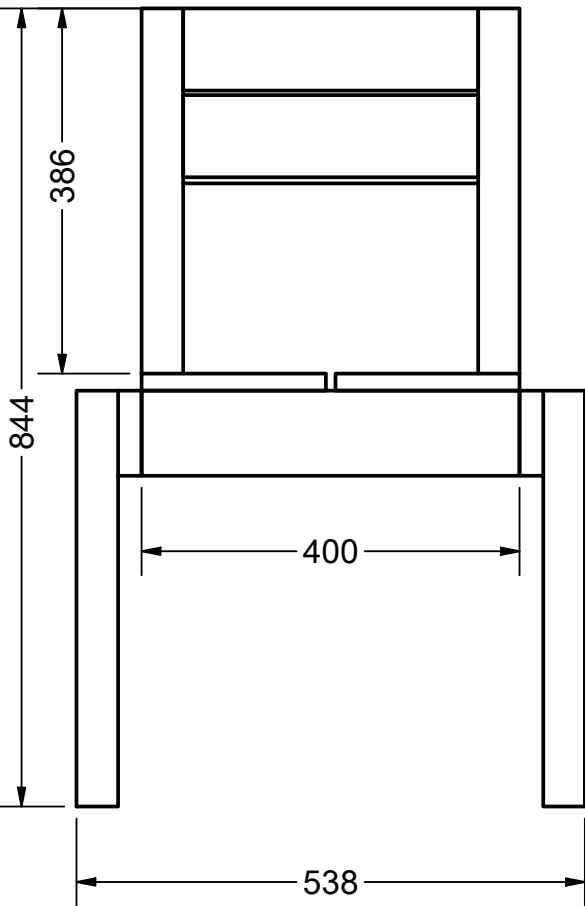
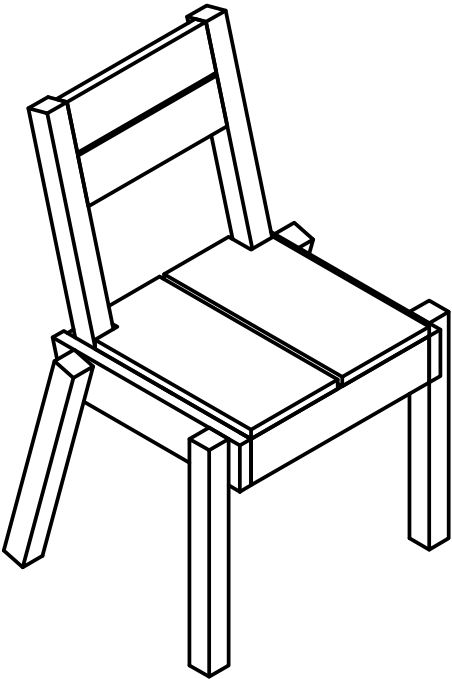
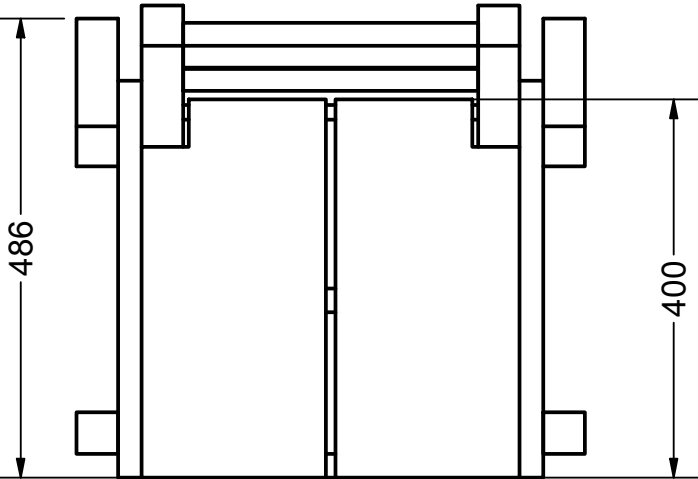
Moses Chair (L)

Place: Classroom. / Education. / Kids.

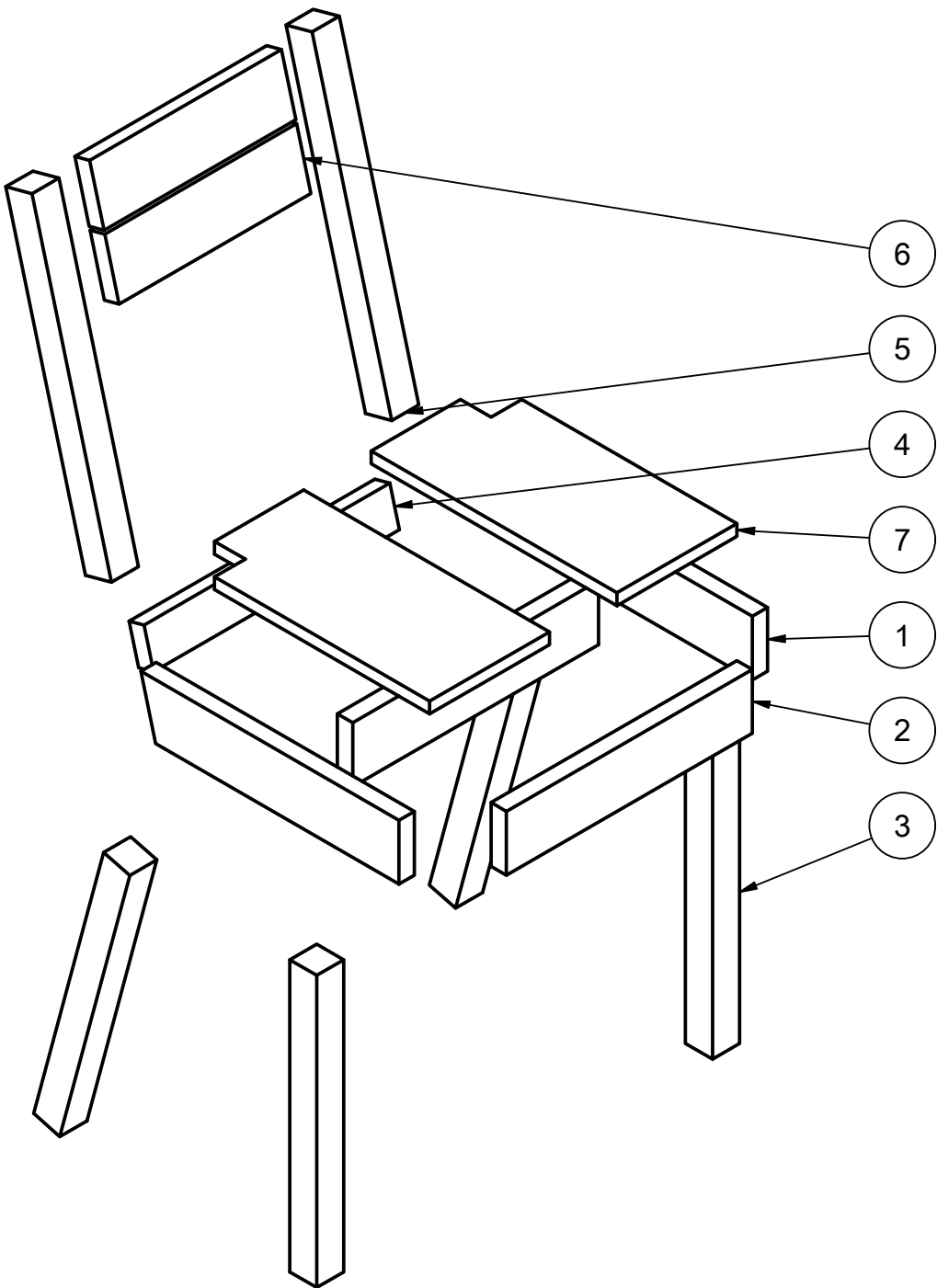
Tools: MiterSaw. / HandSaw.

Material Profile: 2x4 Beam. / Square Profile.

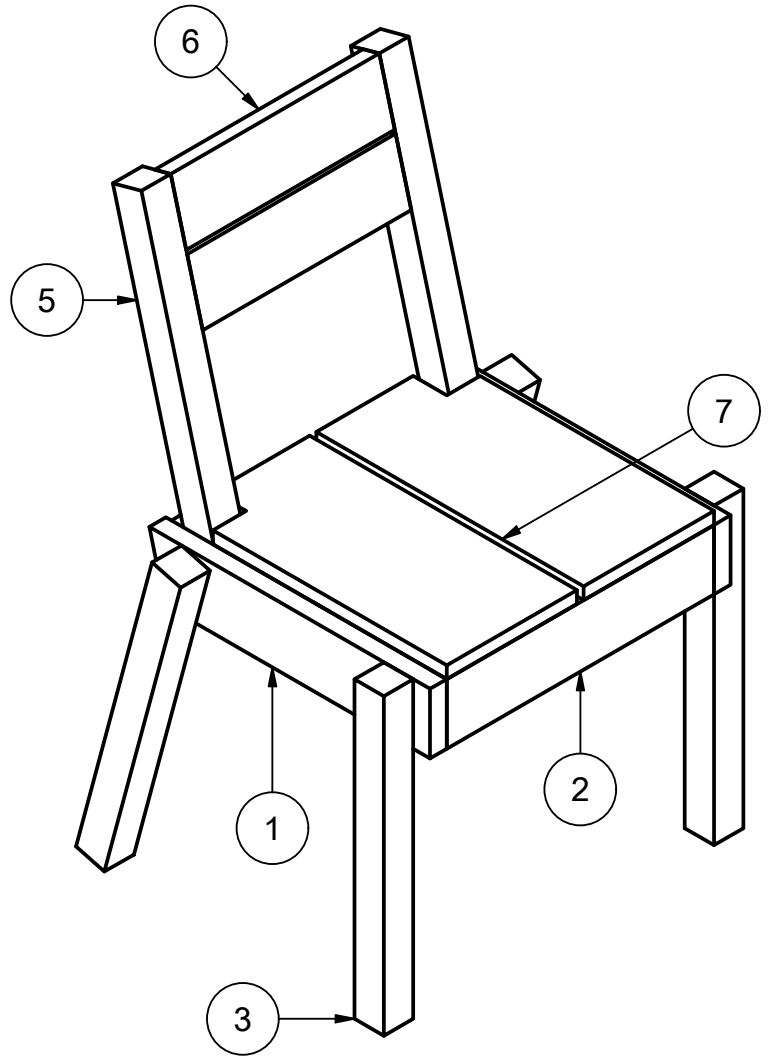
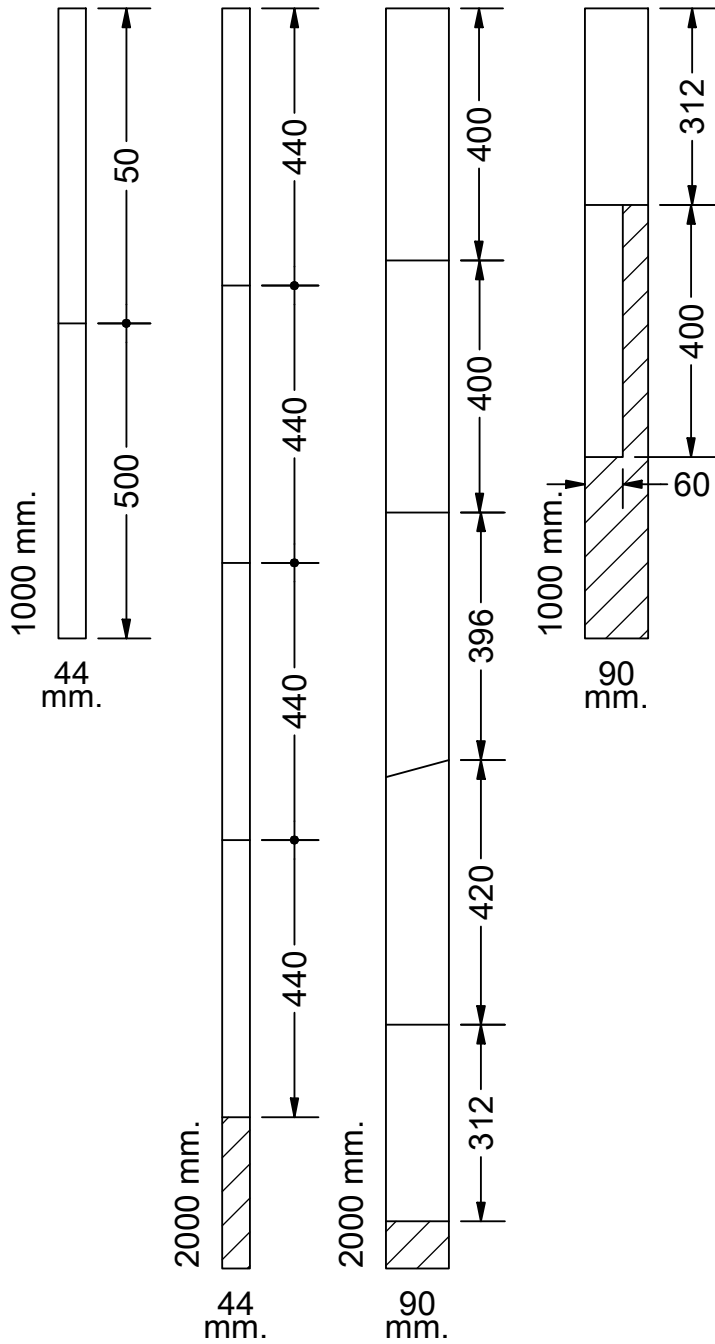
All of the measurements are presented in milimeters.



PARTS LIST		
ITEM	QTY	PART NUMBER
1	2	Lenght Seating Support
2	2	Width Seating Support
3	4	Legs
4	1	Back Width Seating Support
5	2	BackRest Support
6	2	BackRest
7	2	Seating

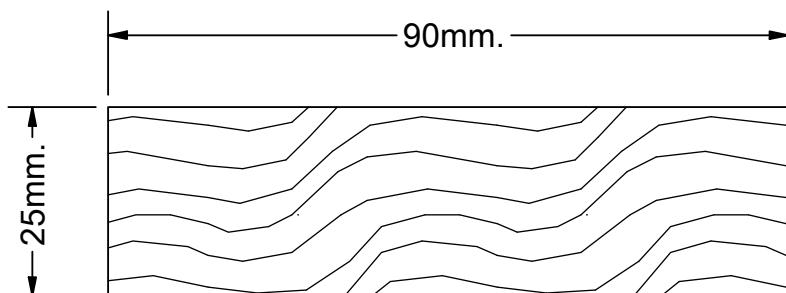


Material Profile



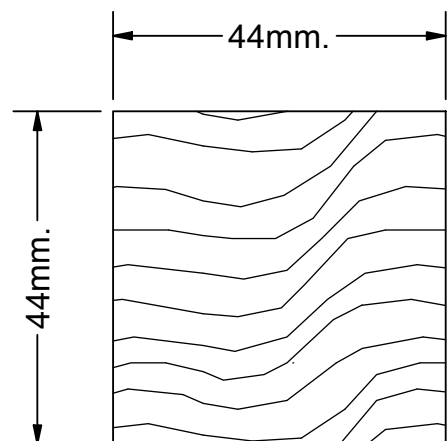
Recommended Material

Dimensions can change when the thickness of the material changes. Adapt to need.



Rectangular Profile

90 x 25 / 100 x 20 / 90 x 30



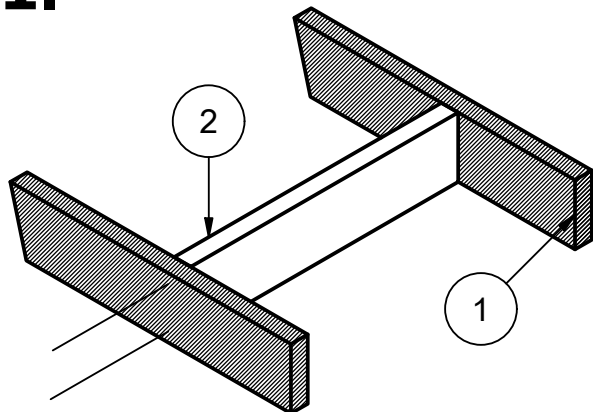
Square Profile

44x44 / 40x40 mm.

Assembly

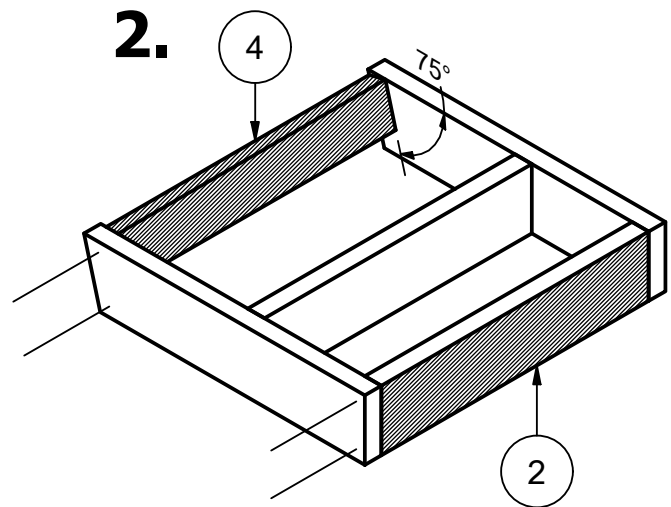
Thin lines indicate screw/nail Placement.
Hatch indicates which piece is being added.

1.



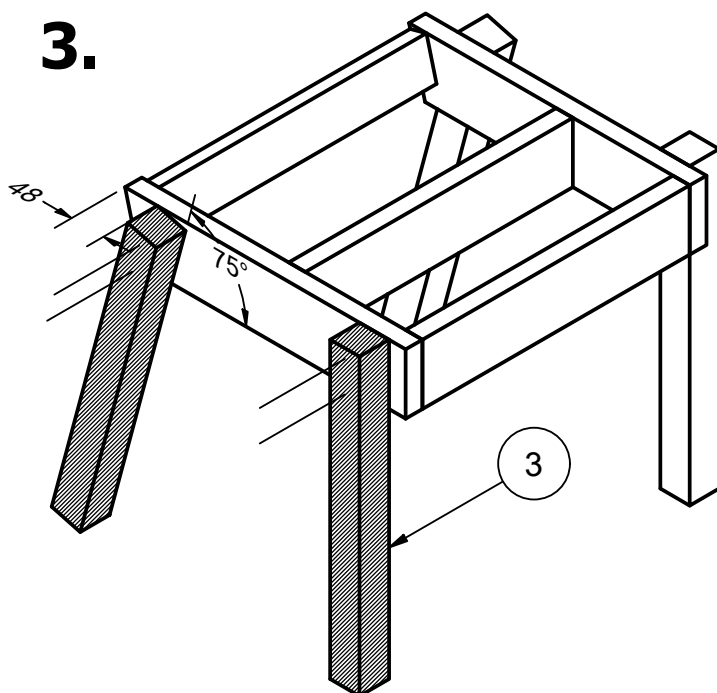
Repeat same process on both sides

2.



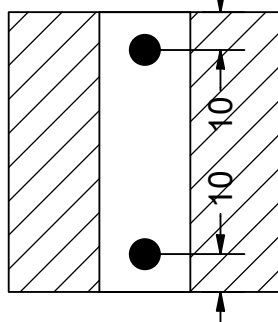
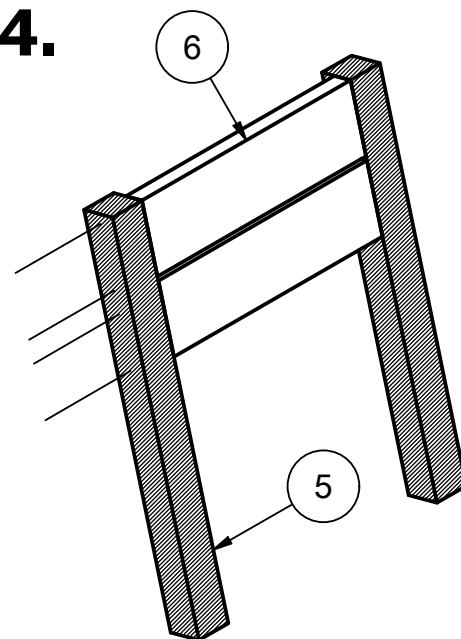
Angle piece N.4 as shown. Align it with the existing cut in piece N1

3.



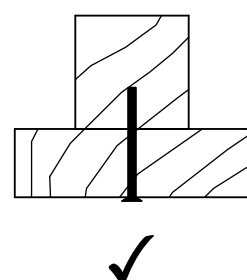
Angle back legs using side view in pag. 1 as reference

4.



Propper Nail / Screw placement

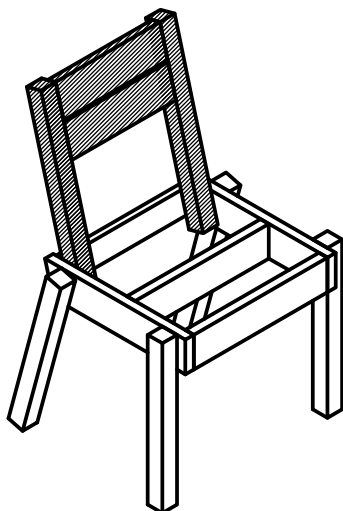
- Minimun 2 nails per joint
- At least 10 mm. from the edge
- Check the direction of the nail and avoid colliding with other nails.
- Attach Nail, from the thinnest part to the thickest (right)



Assembly

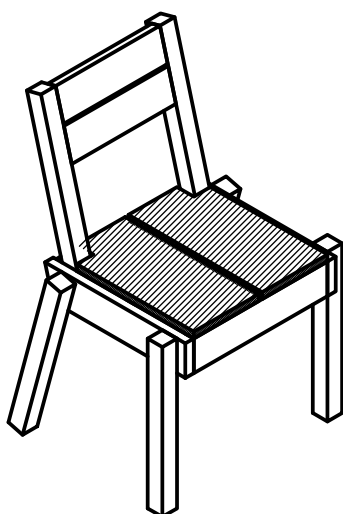
Thin lines indicate screw/nail Placement.
Hatch indicates which piece is being added.

5.

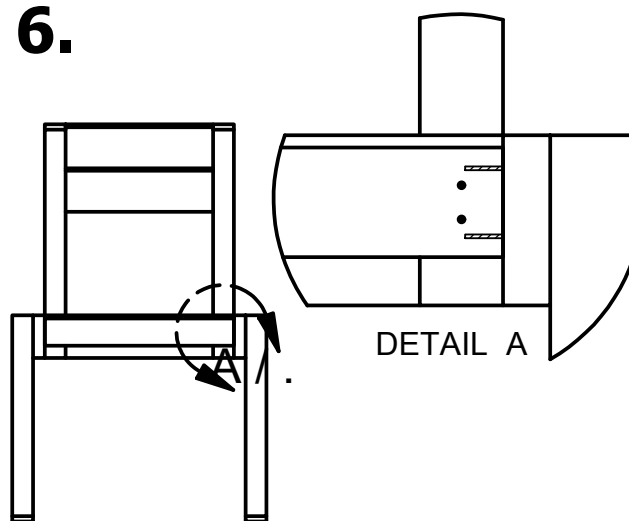


Do not Attach the backrest Supports to the sides of the seating, instead use the back plank. See Step 6

7.



6.

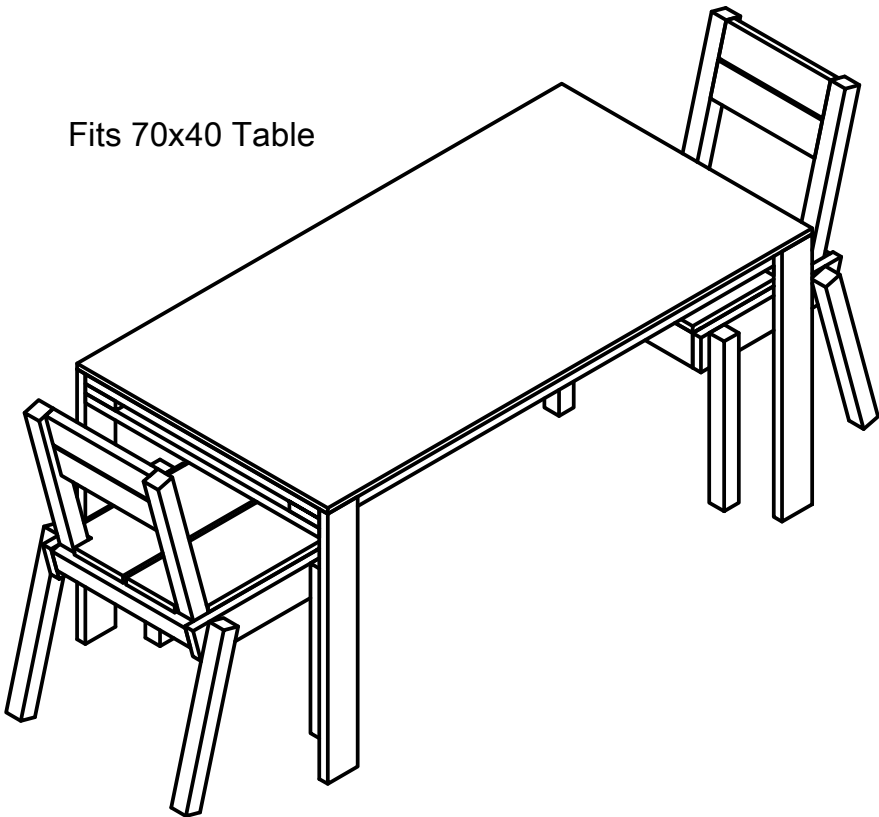


As shown in the detail, avoid the previous nails by putting new ones closer together.

Moses Chair (L)

Possible Uses

Fits 70x40 Table



Stack in Piles of 3

